

PART OF SECTION 8, T.5N., R.1W., S.L.B. & M.

7

AMENDED PLAT OF  
WASHINGTON TERRACE PARCEL 'A'  
BLOCK 8

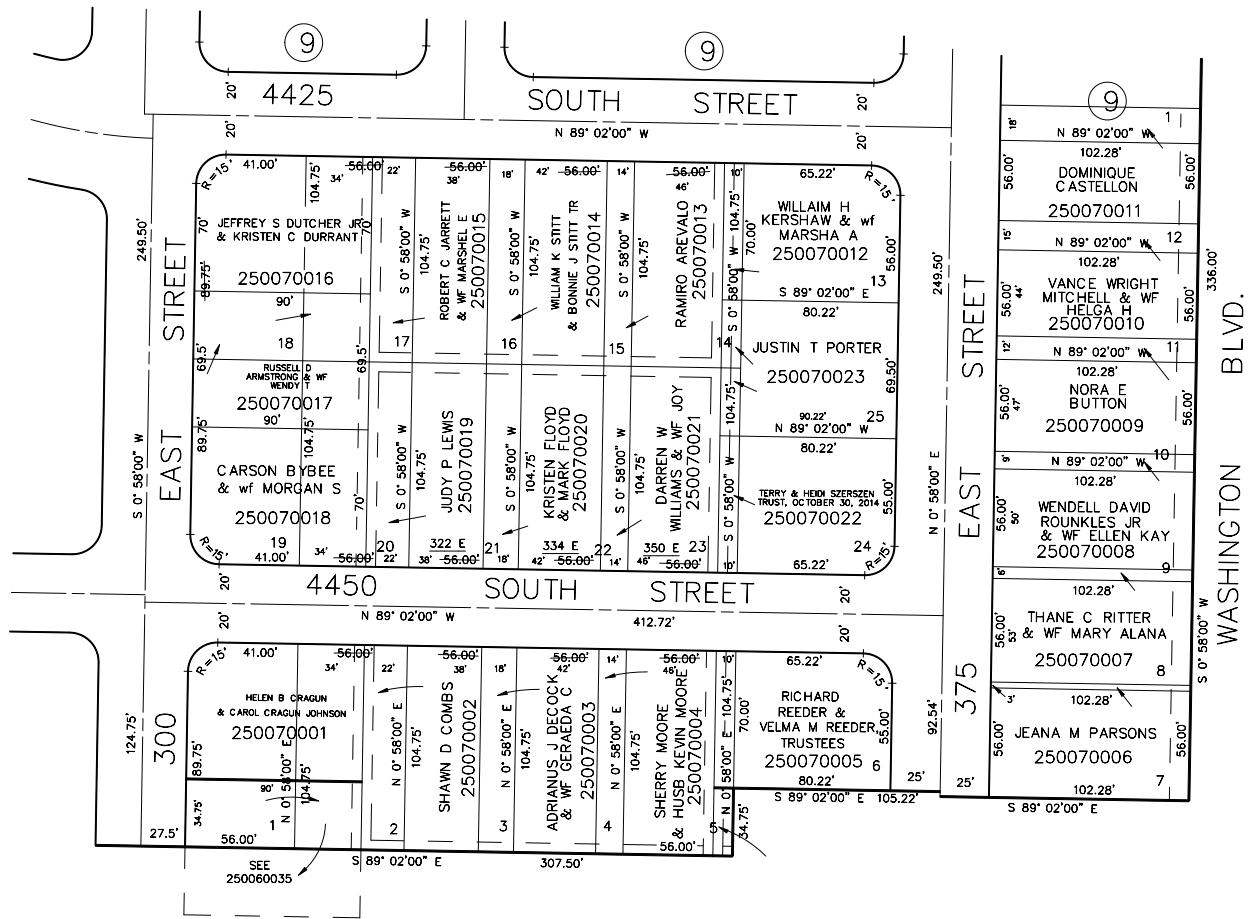
TAXING UNIT: 24

IN WASHINGTON TERRACE CITY  
SCALE 1" = 50'

SEE PAGE 8

SEE PAGE 4

SEE BOOK  
6  
PAGE  
19



SEE PAGE 6

NOTE: OLD EASEMENTS  
VACATED 557-240 &  
589-438

NOTE: NEW 10' UTILITY  
EASEMENTS 561-146

FOR COMPLETE ENG DATA SEE  
ORIGINAL DEDICATION PLAT IN  
BOOK 10, PAGE 77-B OF RECORDS.

5' UTILITY & DRAINAGE EASEMENTS EACH  
SIDE OF PROPERTY LINES AS INDICATED  
BY DASHED LINES EXCEPT AS OTHERWISE  
SHOWN.